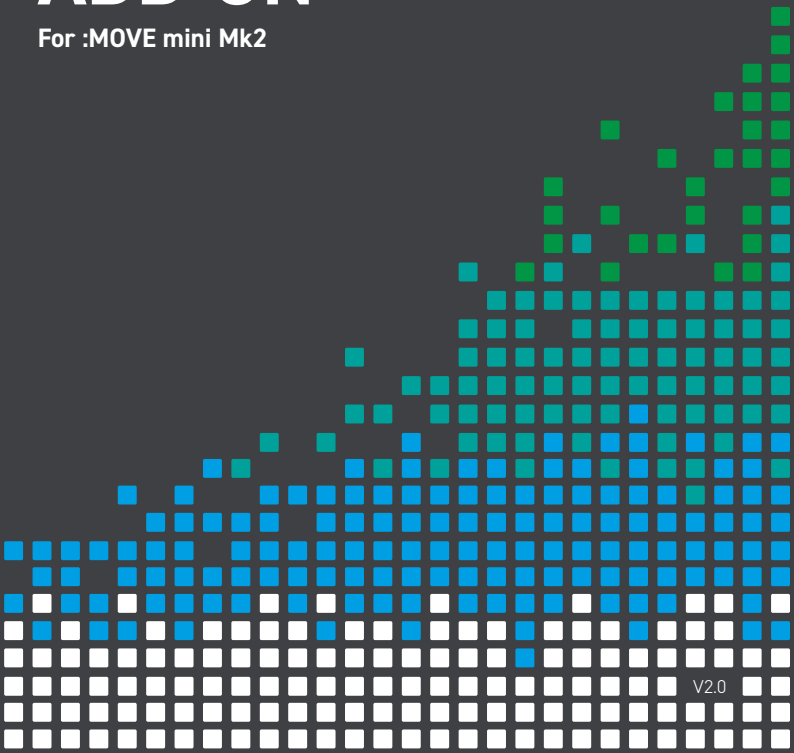




GET LIFTING WITH THE

# BULLDOZER ADD-ON

For :MOVE mini Mk2



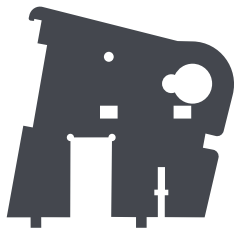
V2.0

## NOTES

This kit is compatible with all versions of :MOVE mini.

If you are using a **Mk2 :MOVE mini**, you will **not** require the two side panels, as shown to the right.

If you have the **original :MOVE mini**, visit [kitronik.co.uk/5671](http://kitronik.co.uk/5671) for instructions.



## BUILD INSTRUCTIONS

### 3 SERVO CONVERSION

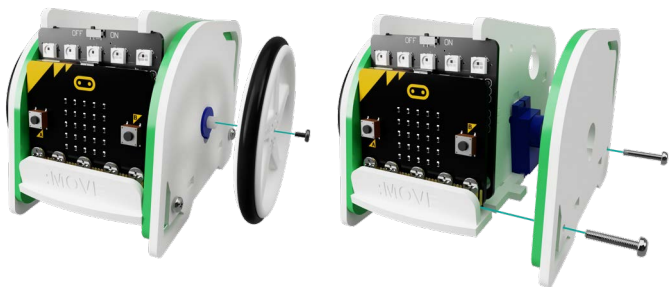
1

The Servo:Lite board will need to be converted for the use of three servos with the pin header provided. Visit [kitronik.co.uk/3servo](http://kitronik.co.uk/3servo) for the online guide.

### DISASSEMBLY

2

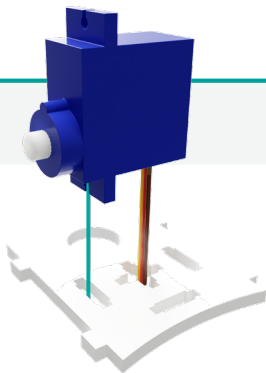
Remove the wheels, followed by the green and white side panels.



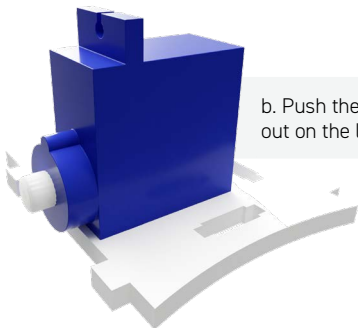
## MOUNT SERVO MOTOR

3

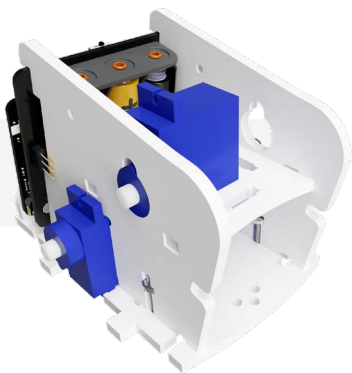
a. Remove the boot lid and feed the new servo cable through the central cross.



b. Push the servo arm into the rectangular cut out on the left hand side.



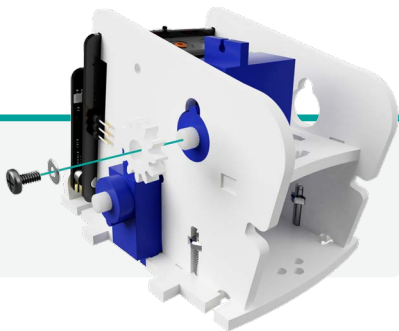
c. Place the boot lid back into its original place, slotting the servo axle through the side panel.



## 4 ADD GEAR

4

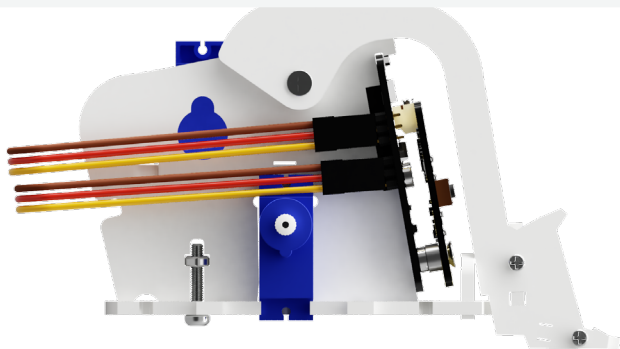
Push the gear onto the servo shaft. Secure in place with a washer and the small screw provided in the servo packet.



## 5 CONNECT SERVO CABLE

5

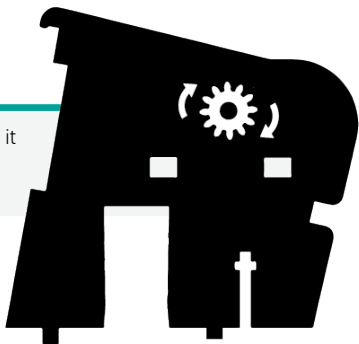
With the back of the board facing you, the third servo attaches to the uppermost, right, set of pins. Track the servo cable round the side of :MOVE mini, and connect to these pins. Make sure the brown cable is at the top!



## 6 SET THE SERVO

6

Gently rotate the servo gear until it reaches its maximum clockwise position.



## 7 ALIGN THE ARM

7

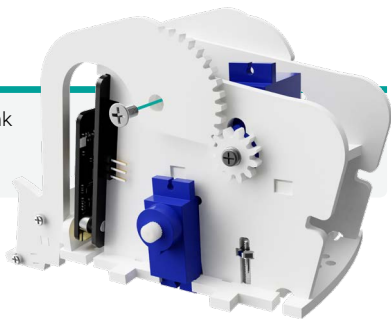
Align the arm with the gear, as shown, in the fully down position.



## 8 SECURE ARM

8

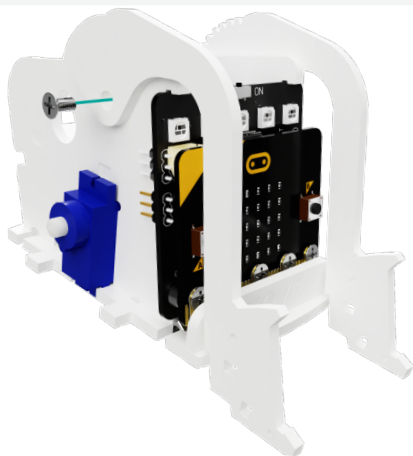
Use one of the M3 Countersunk screws to secure it to :MOVE mini.



## REPEAT

9

Repeat for opposite side, using the remaining bulldozer arm.



## ADD SCOOPS

10

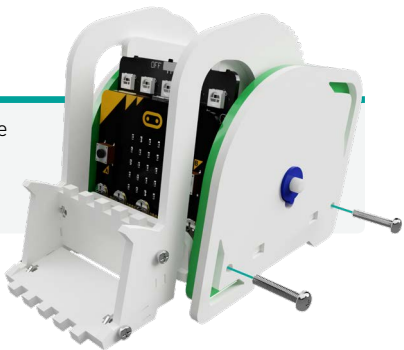
Using the smaller M2x6mm screws, slot the scoops in between the two arms, and secure in place.



11

## REASSEMBLE THE SIDES

Re-assemble the green and white side panels into their original place, and secure with the original nuts and bolts.



12

## ADD THE WHEELS

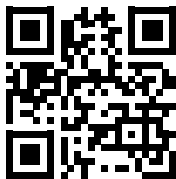
Finally slot the wheels back onto the servo motors, and secure back in place using the small servo screws previously removed.



13

## GET CODING

Visit [kitronik.co.uk/5671](http://kitronik.co.uk/5671) for help.




## TOOLS REQUIRED

- Phillips Screwdriver
- Soldering Iron
- Knife

## STOCK CODE

5671

 **NOTE:** This accessory requires modification to the Servo:Lite board and disables the on board ZIP LEDs. Visit [kitronik.co.uk/3servo](http://kitronik.co.uk/3servo) for the online guide.

## CONTENTS



\*Only required for use with the original :MOVE mini.


 **WARNING:** Contents may inspire creativity

T: 0845 8380781

W: [www.kitronik.co.uk](http://www.kitronik.co.uk)

E: [support@kitronik.co.uk](mailto:support@kitronik.co.uk)



Designed & manufactured  
in the UK by 



[kitronik.co.uk/twitter](https://twitter.com/kitronik)



[kitronik.co.uk/facebook](https://www.facebook.com/kitronik)



[kitronik.co.uk/youtube](https://www.youtube.com/kitronik)



[kitronik.co.uk/instagram](https://www.instagram.com/kitronik)



For more information on RoHs and CE please visit [kitronik.co.uk/rohs-ce](http://kitronik.co.uk/rohs-ce). Children assembling this product should be supervised by a competent adult. The product contains small parts so should be kept out of reach of children under 3 years old.