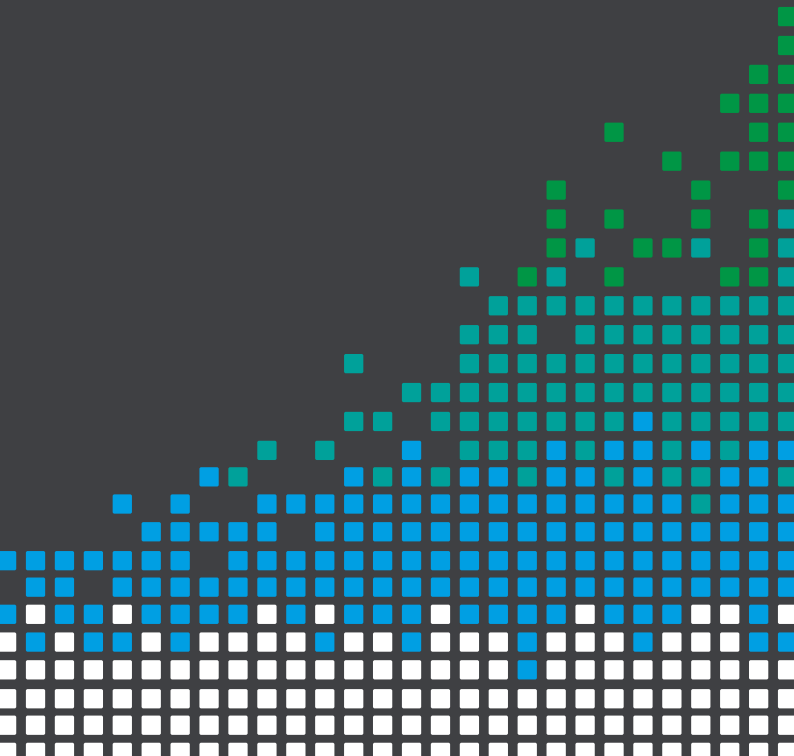




GET LIFTING WITH THE

# :MOVE Mini BULLDOZER ADD-ON



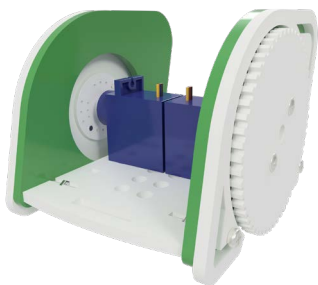
# BUILD INSTRUCTIONS

1

Take the :MOVE mini and remove the front 'MOVE' piece, followed by the SERVO:LITE board, and then the interior panels. Screws on the underside will need to be removed for this.

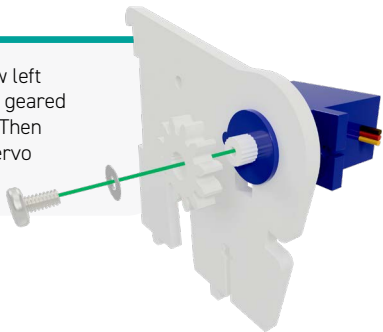


**NOTE:** If not done already, the SERVO:LITE board will need to be converted for use of three servos with the pin header provided. Visit [kitronik.co.uk/3servo](http://kitronik.co.uk/3servo) for the online guide.



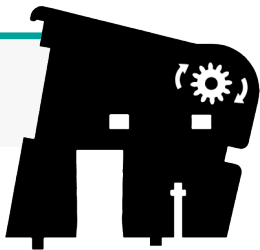
2

Slot the servo into the new left side panel, connecting the geared part onto the servo shaft. Then secure it with the small servo screw and washer.



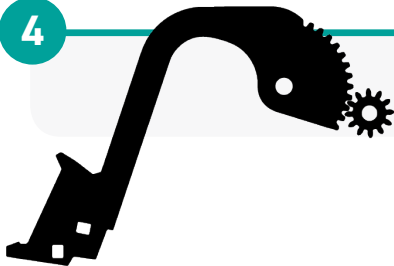
3

Gently rotate the servo gear until it reaches its maximum clockwise position.



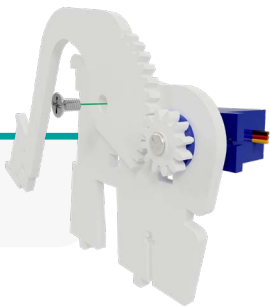
4

Align the arm with the gear as shown in the fully down position.



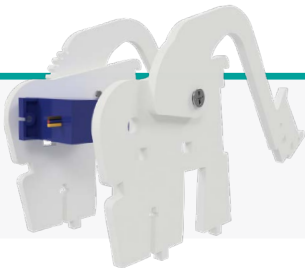
5

Use one of the M3 Countersunk screws to attach the bulldozer arm.



6

Repeat for opposite side, using the arm which does not have the gear tooth profile and one of the side panels previously removed from your :MOVE mini.



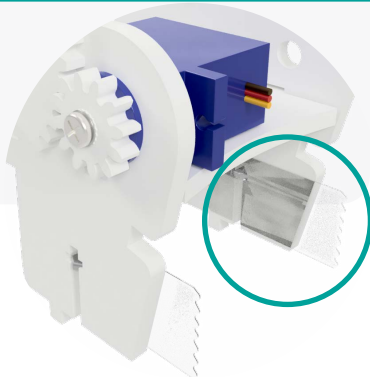
7

Using the smaller M2 screws, slot the scoops in between the two arms, and secure in place. Then slot the pen mounting plate under the servo.



8

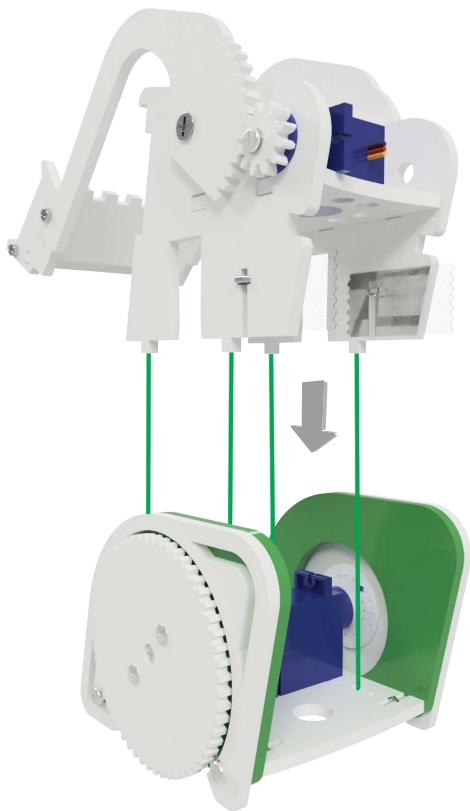
Place some tape over the inside of each side panel and insert M2 nuts. This will help to keep the nuts secure in the slot for the next step.



**NOTE:** If you do not have any tape available - you will need to disassemble your :MOVE mini and follow the instructions from the original :MOVE mini manual. Simply replace the two inner side panels with this module you have just built.

9

Slot the bulldozer module in between the two exterior sides as shown below.



10

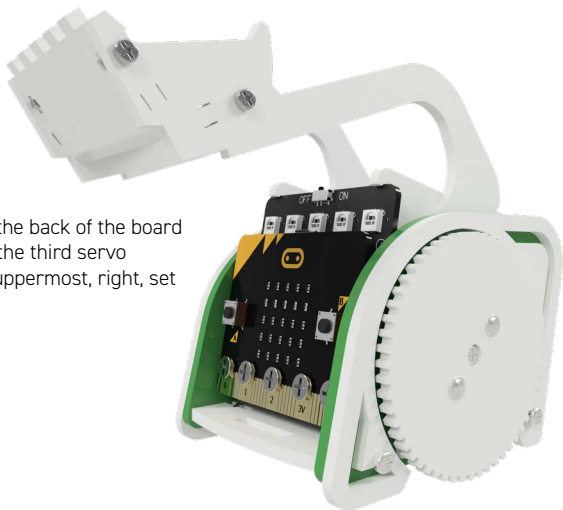
Use a screwdriver to tighten the screws and lock the module in place. Once secure, remove the tape.



11

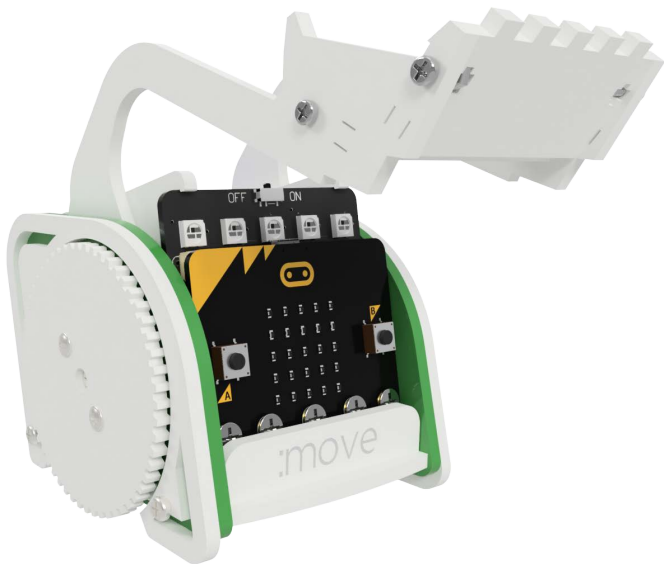
Re-attach the three servo cables, and return the SERVO:LITE board back into :MOVE mini.

**NOTE:** With the back of the board facing you - the third servo attaches to uppermost, right, set of pins.



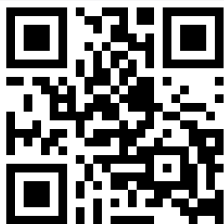
12

Replace the :MOVE piece.



13

GET CODING!  
Visit [kitronik.co.uk/5624-BD](https://www.kitronik.co.uk/5624-BD) for help.





### TOOLS REQUIRED

- Small Phillips Screwdriver
- Soldering Iron
- Knife



### STOCK CODE

5624-BD



This accessory requires modification to the Servo:Lite board and disables the on board ZIP LEDs. Visit [kitronik.co.uk/3servo](http://kitronik.co.uk/3servo) for the online guide.



**WARNING** : Contents may inspire creativity

---



T: 0845 8380781

---

W: [www.kitronik.co.uk](http://www.kitronik.co.uk)

---

E: [support@kitronik.co.uk](mailto:support@kitronik.co.uk)

 **Designed & manufactured  
in the UK by** 



[kitronik.co.uk/twitter](https://twitter.com/kitronik)



[kitronik.co.uk/facebook](https://facebook.com/kitronik)



[kitronik.co.uk/youtube](https://youtube.com/kitronik)



[kitronik.co.uk/google](https://google.com/kitronik)



For more information on RoHs and CE please visit [kitronik.co.uk/rohs-ce](http://kitronik.co.uk/rohs-ce). Children assembling this product should be supervised by a competent adult. The product contains small parts so should be kept out of reach of children under 3 years old.